



Chicago Fire Department

Robert S. Hoff, Fire Commissioner

10 W. 35th Street, 14th Floor

Chicago, IL 60616

Phone: (312) 745-4200

Email: robert.hoff@ex.cityofchicago.org

Central Purpose

- Quickly and efficiently rescue persons trapped or injured by fire, accident, collapse or terrorist activity, while mitigating the circumstances surrounding the event
- Provide comprehensive medical care to triage, stabilize and transport the injured
- Educate the public on preparedness for all hazards, including fire, hazardous atmosphere and chemical incidents
- Enforce the Chicago Fire Code to make business and residential quarters as safe as possible

Key Facts

The Chicago Fire Department (CFD) is the second largest department in the nation, with nearly 100 firehouses that are responsible for more than 228 square miles of the city. The CFD has a wide range of emergency response vehicles, including specialty apparatus such as two rapid response fire boats, two helicopters with infrared technology and state-of-the-art communications, command/communication vehicles, 60 advanced life support (ALS) ambulances and 15 basic life support (BLS) ambulance units. Emergency Medical Services (EMS) operations are also supplemented by a number of ALS and BLS engines and trucks and during special events, the CFD's ALS Mobile Medic Response Teams (MMRTs) are activated.

The CFD aggressively promotes fire safety and prevention programs. Through the CFD's Public Education program, the department provides fire safety training to the residents of Chicago and works with major contributors to assure that smoke detectors are available for families who cannot afford them. Additionally, smoke detectors are distributed at firehouses and aldermanic offices throughout the City.

CFD's response time to structural fires remains below the nationally recognized standard of four (4) minutes established by the National Fire Protection Association. In 2010, CFD response times were 3.5



minutes. CFD's 2011 target remains the national standard at four (4) minutes.

Equally important is maintaining EMS response time trends as low as possible. The estimated average response time for 2010 is approximately four (4) to eight (8) minutes and the CFD will strive to maintain its 2011 performance target of six (6) minutes by having as many Advanced Life Support (ALS) and Basic life Support (BLS) equipped vehicles as possible.

Critical Programs/Services to Assist Residents

SAFETY AWARENESS

ABC 7 Chicago and the CFD – Save a Life Program

In our efforts to increase fire safety awareness throughout the City, the CFD partners with ABC7 to develop a series of Public Service Announcements. This partnership has been in place for eight years and it is an important awareness program that benefits every Chicagoan.

College Residential Housing, Hotel Safety, Residential/Commercial High-Rise Building Safety, Home Fire Safety: As part of our citywide efforts to promote fire safety, the CFD develops a

series of DVDs that showcase fire safety and the proper installation of smoke detectors. These DVDs are provided to the public, free of charge, and are available at all Chicago Libraries and available for viewing on *YouTube*.

NBC 5 Chicago and the CFD – Firefighter/Paramedic Physical Fitness program: In our efforts to increase health and safety awareness, the CFD partners with NBC 5 Chicago. The CFD conducts on the air demonstrations on proper fitness techniques and provides nutrition information to the viewing audience.

COMMUNITY OUTREACH

Smoke Detector Program: The CFD targets wards with high numbers of fire incidents, injuries and/or deaths and will canvass selected neighborhoods with free smoke detectors and installation. Additionally, the CFD provides free smoke detectors that can be obtained from all firehouses and aldermanic offices.

Community Outreach/Block Club Participation: The CFD participates in city-wide block clubs to provide information with smoke detectors, home escape planning, fire extinguishers, electricity, carbon monoxide, kitchen safety, barbeque, safety, people with physical challenges and senior citizens

Learn and Live Campaign: This is a community awareness program to educate the public about life safety. This event is hosted in multiple locations throughout the city and is typically held outdoors, provides life saving information, demonstrations and booths regarding smoke detectors, home escape planning, fire extinguishers, electricity, carbon monoxide, kitchen safety, barbeque safety, people with physical challenges and senior citizens.

EDUCATION

School Crosswalk Program: As part of the City’s back to school efforts, all CFD firehouses assist school children walking through busy intersections. This program promotes safety and is a great way to ensure we are working along side with every resident, especially children and youth.

Bud Billiken Parade: To support the City’s back to school efforts, the CFD participates in the Bud Billiken

Parade yearly and hosts a picnic that is open to the public providing free food to hundreds of families.

CHILD SAFETY

Survive Alive House: We believe that educating our children about safety does save lives. The Survive Alive House is a playhouse that allows children to learn about fire safety in the home by participating in various education stations and fire safety role-playing. This facility is open to the general public, schools and other organizations free or charge.

Child Safety Seat Installment: Held once a year, the CFD invites the public to come to the Quinn Fire Academy to receive proper instruction on the installation of car safety seats. The public can also go to any firehouse to receive similar instruction.

SENIOR SAFETY

Senior Citizen Program: To increase fire safety awareness among Chicago’s senior citizen population, the CFD visits senior citizen facilities and provides instruction on fire safety and the proper installation of smoke detectors. All attendees are provided free smoke detectors as well as free medical palm cards.

Employees

Full Time Positions	Amount
	5,177

2011 Budget

Fund	Amount
Corporate Fund	\$483,423,494
Chicago O’Hare Airport Fund	\$19,245,132
Chicago Midway Airport Fund	\$6,436,837
Other Grant Fund	\$17,381,000
TOTAL	\$526,820,291

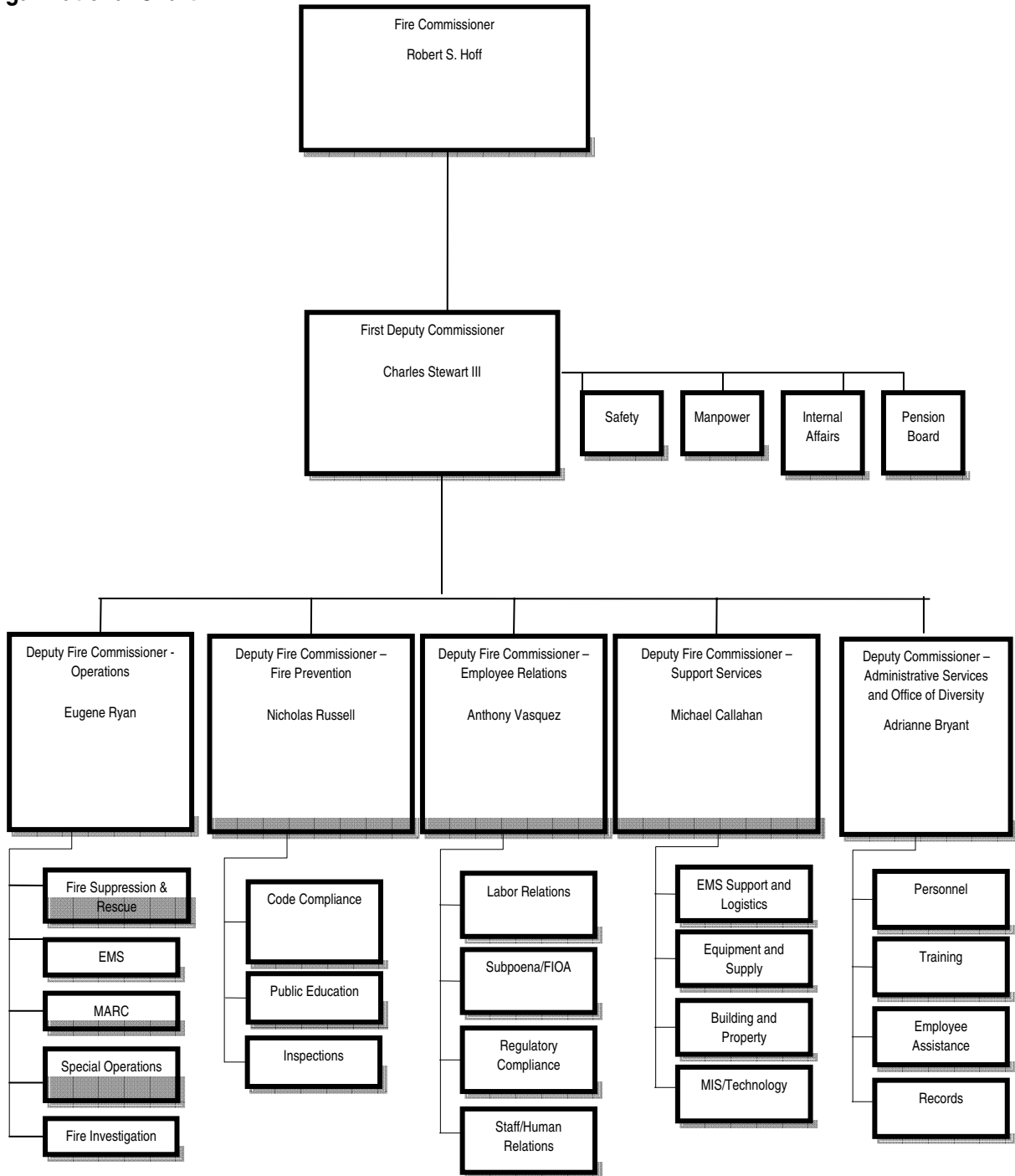
Grants

FEDERAL Grant or Program	Term
Assistance to Firefighters- Fire Prevention and Safety Grant (\$994,400) <ul style="list-style-type: none"> • Installation of 16,000 10-year lithium battery smoke detectors in high risk neighborhoods • Development of a web-based Fire Safety Director Re-certification Program 	September 2009-March 2011
Assistance to Firefighters- Fire Vehicle Grant (\$2,560,000): Purchase four aerial ladder trucks	April 2010-April 2011
Assistance to Firefighters- Fire Station Construction Grant (\$4,800,000): Construction of new firehouse for Engine 16	September 2009-September 2012
*Additional federal funding received as a sub-grantee of OEMC for the Urban Area Security Initiative, Port Security, and Buffer Zone Protection Program grant initiatives.	
STATE Grant or Program	Term
Fire Academy Training and Improvement Fund (\$1,900,000): Reimbursement from the state for training program activities including improvements to the training academy facility, external seminars and training courses, development of new training materials, and select overtime expenses.	Annual
Underground Storage Tank Inspections (\$550,000: one third of funding allocated to Department of Environment): Used to offset Fire Prevention Inspection Division salaries for underground storage tank inspections.	Annual

Major Contracts

Vendor	End Date
LAKE COUNTY DIVERS SUPPLY	31-Oct-12
AIR ONE EQUIPMENT INC	31-Mar-11
LION APPAREL, INC	21-Jun-11
MES-ILLINOIS	31-Aug-11
AIR ONE EQUIPMENT INC	31-Oct-12
ERLA INC. D/B/A EMSAR	29-Feb-12
ENVIRONMENTAL SAFETY GROUP	31-Aug-12
CHICAGO FIRE COMMISSARY INC.	31-Jul-13
5-ALARM FIRE AND SAFETY	31-Dec-12
PHYSIO-CONTROL INC	31-Mar-11
ROOT BROS MFG & SUPPLY CO	31-Mar-11
MES-ILLINOIS	31-Mar-11
AIR ONE EQUIPMENT INC	30-Apr-11
MIDWEST MEDICAL SUPPLY CO	31-Mar-11
CHICAGO UNITED INDUSTRIES, LTD	31-May-11
A F C INTERNATIONAL, INC.	30-Jun-11
PROGRESSIVE INDUSTRIES, INC.	31-Aug-11
ROOT BROS MFG & SUPPLY CO	30-Sep-11
A F C INTERNATIONAL, INC.	30-Sep-11
AIR ONE EQUIPMENT INC	30-Sep-11
PHYSIO-CONTROL INC	29-Feb-12
HIKE METAL PRODUCTS LIMITED	20-Dec-11
AIR ONE EQUIPMENT INC	31-Mar-12
AOMS	31-Mar-12
LAERDAL MEDICAL CORPORATION	23-Jun-13
AIR ONE EQUIPMENT INC	07-Feb-13
MOORE MEDICAL LLC	31-Oct-11
QUEST DIAGNOSTICS INC	31-Mar-12
ENVIRONMENTAL SAFETY GROUP	31-Dec-15

Organizational Chart



Facility Locations

Location	Address	Hours
Engine 1	419 S. WELLS STREET	24 hrs
Engine 4	548 W. DIVISION STREET	24 hrs
Engine 5	324 S. DESPLAINES STREET	24 hrs
Engine 7	4911 W. BELMONT	24 hrs
Engine 8	212 W. CERMAK ROAD	24 hrs
Engine 9	RESCUE STATION 3 O'HARE	24 hrs
Engine 10	RESCUE STATION 2 O'HARE	24 hrs
Tower Ladder 63	RESCUE STATION 1 O'HARE	24 hrs
	RESCUE STATION 4 O'HARE	24 hrs
	AMC BUILDING	24 hrs
Engine 11	5343 N. CUMBERLAND AVE	24 hrs
Engine 13	259 N. COLUMBUS DRIVE	24 hrs
Engine 14	1129 W. CHICAGO AVE	24 hrs
Engine 15	8026 S KEDZIE AVE	24 hrs
Engine 16	4005 S DEARBORN ST	24 hrs
Engine 18	1360 S BLUE ISLAND AVE	24 hrs
Engine 19	3421 S CALUMET AVE	24 hrs
Engine 22	605 W ARMITAGE AVE	24 hrs
Engine 23	1915 S DAMEN AVE	24 hrs
Engine 26	10 N LEAVITT ST	24 hrs
Engine 28	2534 S THROOP ST	24 hrs
Engine 29	3509 S LOWE AVE	24 hrs
Engine 30	1125 N ASHLAND AVE	24 hrs
Engine 32	5559 S NARRAGANSETT AVE	24 hrs
Engine 34	4034 W 47TH ST	24 hrs
Engine 35	1901 N DAMEN AVE	24 hrs
Engine 38	3949 W 16TH	24 hrs
Engine 39	1618 W 33RD PL	24 hrs
Engine 42	55 W ILLINOIS ST	24 hrs
Engine 43	2179 N STAVE ST	24 hrs
Engine 44	412 N KEDZIE AVE	24 hrs
Engine 45	4600 S COTTAGE GROVE AVE	24 hrs
Engine 46	3027 E 93RD ST	24 hrs
Engine 47	432 E MARQUETTE RD	24 hrs
Engine 49	4401 S ASHLAND AVE	24 hrs
Engine 50	5000 S UNION AVE	24 hrs
Engine 54	7101 S PARNELL AVE	24 hrs
Engine 55	2718 N HALSTED ST	24 hrs
Engine 56	2214 W BARRY AVE	24 hrs
Engine 57	1244 N WESTERN AVE	24 hrs

Location	Address	Hours
Engine 1	419 S. WELLS STREET	24 hrs
Engine 4	548 W. DIVISION STREET	24 hrs
Engine 5	324 S. DESPLAINES STREET	24 hrs
Engine 58	SUMMER - FILTRATION PLANT WINTER - NAVY PIER	24 hrs
Engine 59	6030 N CLARK ST	24 hrs
Engine 60	1150 E 55TH ST	24 hrs
Engine 62	34 E 114TH ST	24 hrs
Engine 63	1440 E 67TH ST	24 hrs
Engine 64	7659 S PULASKI RD	24 hrs
Engine 65	3002 W 42ND ST	24 hrs
Engine 68	5258 W GRAND AVE	24 hrs
Engine 69	4017 N TRIPP AVE	24 hrs
Engine 70	6030 N CLARK ST	24 hrs
Engine 71	6239 N CALIFORNIA AVE	24 hrs
Engine 72	7974 S. SOUTH CHICAGO AVE	24 hrs
Engine 73	8630 S EMERALD AVE	24 hrs
Engine 74	10615 S EWING AVE	24 hrs
Engine 75	11958 S STATE ST	24 hrs
Engine 76	1747 N PULASKI RD	24 hrs
Engine 78	1052 W WAVELAND AVE	24 hrs
Engine 79	6424 N LEHIGH AVE	24 hrs
Engine 80	12701 S DOTY AVE	24 hrs
Engine 81	10458 S HOXIE AVE	24 hrs
Engine 82	817 E 91ST ST	24 hrs
Engine 83	1200 W WILSON AVE	24 hrs
Engine 84	21 W 59TH ST	24 hrs
Engine 86	3918 N HARLEM AVE	24 hrs
Engine 88	3637 W 59TH ST	24 hrs
Engine 89	3945 W PETERSON AVE	24 hrs
Engine 91	2827 N PULASKI RD	24 hrs
Engine 92	3112 W 111TH ST	24 hrs
Engine 93	330 W 104TH ST	24 hrs
Engine 94	5758 W GRACE ST	24 hrs
Engine 95	4003 W WEST END AVE	24 hrs
Engine 96	439 N WALLER AVE	24 hrs
Engine 97	13359 S BURLEY AVE	24 hrs
Engine 98	202 E CHICAGO AVE	24 hrs
Engine 99	3042 S KEDVALE AVE	24 hrs
Engine 101	2236 W. 69TH STREET	24 hrs
Engine 102	7340 N CLARK ST	24 hrs

Location	Address	Hours
Engine 1	419 S. WELLS STREET	24 hrs
Engine 4	548 W. DIVISION STREET	24 hrs
Engine 5	324 S. DESPLAINES STREET	24 hrs
Engine 103	25 S LAFLIN ST	24 hrs
Engine 104	11641 S AVENUE O	24 hrs
Engine 106	3401 N ELSTON AVE	24 hrs
Engine 107	1101 S CALIFORNIA AVE	24 hrs
Engine 108	4625 N MILWAUKEE AVE	24 hrs
Engine 109	2358 S WHIPPLE ST	24 hrs
Engine 110	2322 W FOSTER AVE	24 hrs
Engine 112	3801 N DAMEN AVE	24 hrs
Engine 113	5212 W HARRISON ST	24 hrs
Engine 115	11940 S PEORIA ST	24 hrs
Engine 116	5955 S ASHLAND AVE	24 hrs
Engine 117	4900 W CHICAGO AVE	24 hrs
Engine 119	6030 N AVONDALE AVE	24 hrs
Engine 120	11035 S HOMEWOOD AVE	24 hrs
Engine 121	1724 W 95TH ST	24 hrs
Engine 122	101 E 79TH ST	24 hrs
Engine 123	2215 W 51ST ST	24 hrs
Engine 124	4426 N KEDZIE AVE	24 hrs
Engine 125	2323 N NATCHEZ AVE	24 hrs
Engine 126	7313 S KINGSTON AVE	24 hrs
Engine 127	5200 W 63RD ST	24 hrs
Engine 129	8120 S ASHLAND AVE	24 hrs
Truck 24	10400 S VINCENNES AVE	24 hrs
Air Sea Rescue	3954 E. FORMAN DRIVE	24 hrs
39 th Street Warehouse	3950 S. HONORE	24 hrs
Air Mask	1044 N. ORLEANS	24 hrs
CFD HQ	10 W. 35 TH STREET	Business
EMS Field Division South	5349 S. WABASH	24 hrs
EMS Field Division North	1732 W. BYRON	24 hrs
Quinn Fire Academy	558 W. DEKOVEN	Business
Fire Academy South	1338 S. CLINTON	Business
Fire Prevention HQ	444 N. DEARBORN	24 hrs
Fire prevention North	3401 N. ELSTON AVE	24 hrs
FPB South	7974 S SOUTH CHICAGO AVE	24 hrs
FPB West	1101 S. CALIFORNIA AVE	24 hrs
Off. of Fire Investigations	1360 BLUE ISLAND (E-18)	24 hrs
Public Education	1010 S CLINTON	24 hrs
Support & Logistics	3040 S SACRAMENTO	24 hrs

Location	Address	Hours
Engine 1	419 S. WELLS STREET	24 hrs
Engine 4	548 W. DIVISION STREET	24 hrs
Engine 5	324 S. DESPLAINES STREET	24 hrs
Support Services	3015 W 31ST	24 hrs
Special Ops Warehouse	1869 W PERSHING	24 hrs

Unions Representing Department Employees

Unions
Chicago Firefighters Union Local #2
AFSCME
Laborers Local #1001
Laborers Local #1092
Machinists Local #126
Masters, Mates and Pilots
Illinois Nurses Association